



BRITTA BR1B-L
black coated
859 x 712 mm

BRITTA BR1SS-RK
polished stainless steel
859 x 712 mm



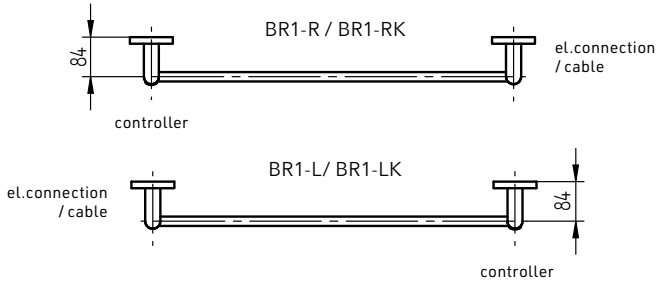
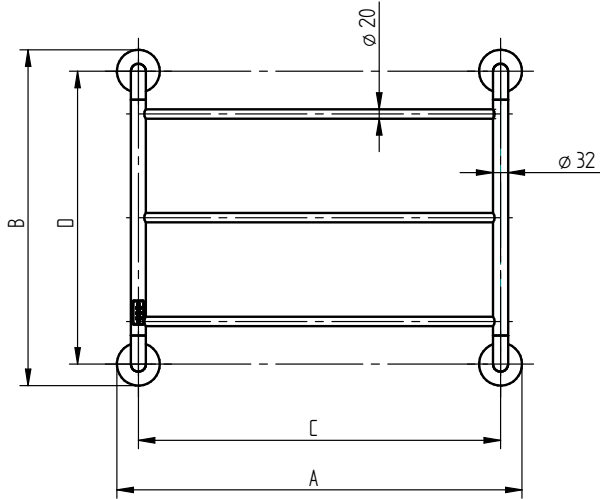
TIMER function



Function 2 h - the dryer will heat for 2 hours, then it will automatically turn off.

Function 4 h - the dryer will heat for 4 hours, then it will automatically turn off.

ON/OFF
The green LED indicates that the dryer is ON.



BRITTA	Black coated	Polished stainless steel	Width (A) x Height (B) [mm]	C	Hidden connection	With cable	Weight [kg]	HO [W]	Degree of protection
right	BR1B-R	BR1SS-R	859 x 712	768	✓		2,9	42	IP44
left	BR1B-L	BR1SS-L	859 x 712	768	✓		2,9	42	IP44
right	BR1B-RK	BR1SS-RK	859 x 712	768		✓	2,9	42	IP44
left	BR1B-LK	BR1SS-LK	859 x 712	768		✓	2,9	42	IP44

Right / left variants depending on the side of the electrical connection / cable. If the electrical connection / cable is on the right, the controller is on the left = right-hand variant BR1-R/BR1-RK, and conversely.